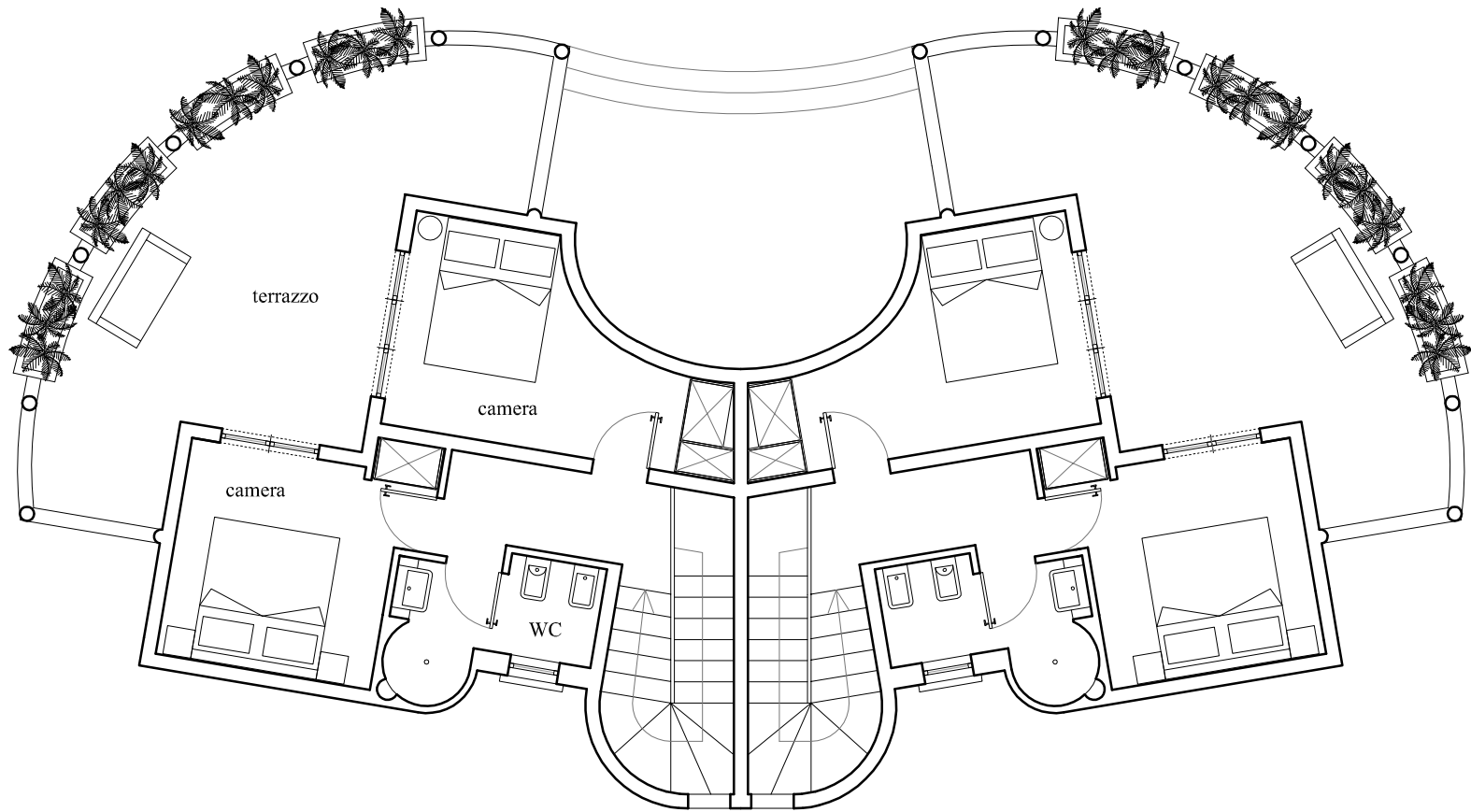
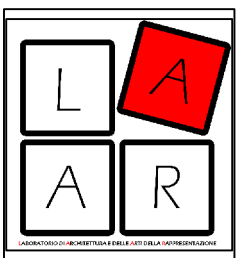
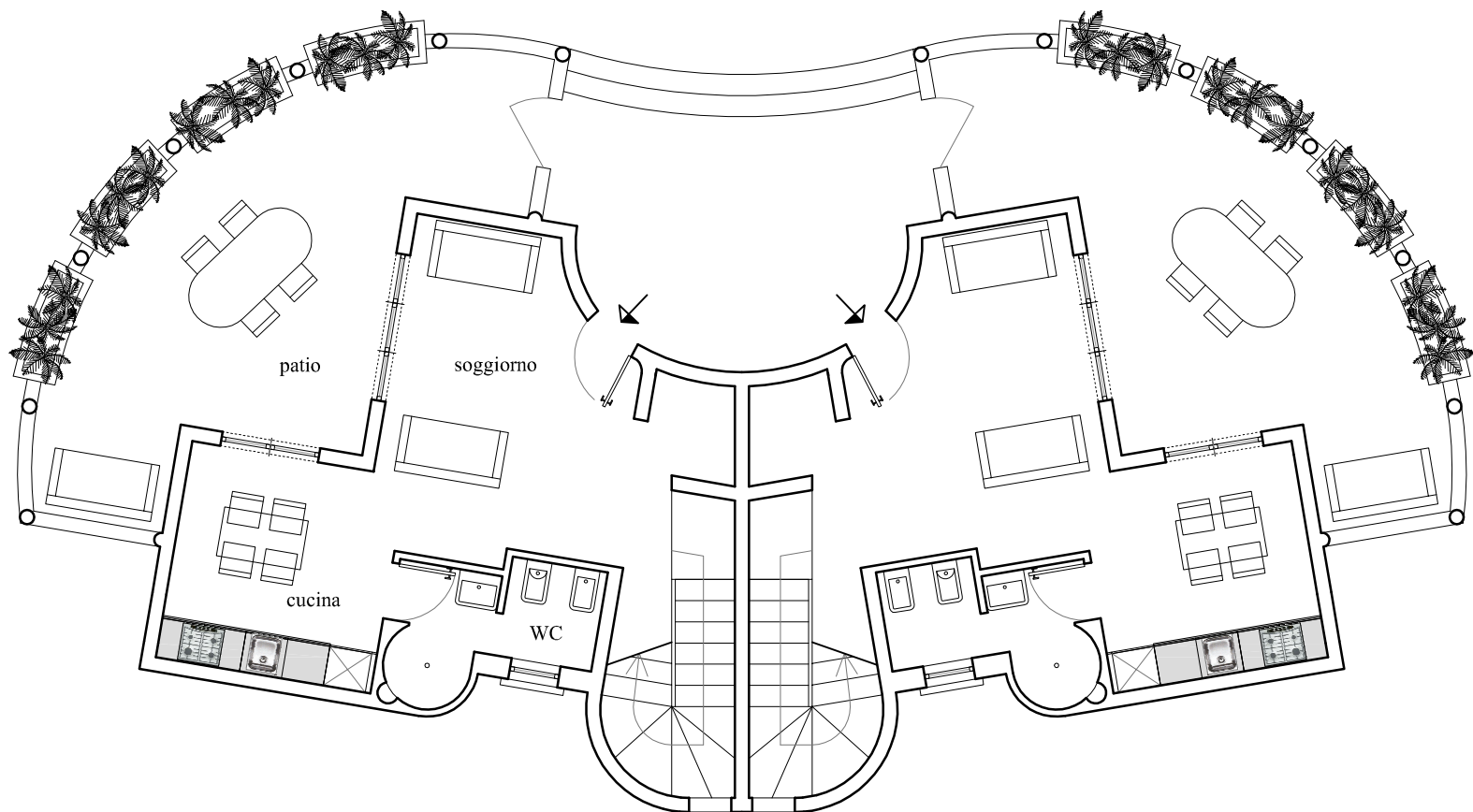


EDIFICIO C
 n. 2 ville bifamiliari su 2 livelli
 mq. calp. 140
 € 95.000,00 cad.

PIANTA PIANO PRIMO



PIANTA PIANO TERRA



Cliente: WARIDI VILLAGE					Ns.Rif. :
Elaborato: EDIFICIO C					
Rev.	Data:	Progettista:	Responsabile Commessa (visto/data) :	Venditore (visto/data):	Cliente per accettazione
-	-	arch. A. Coppola	-	-	
Scala:	Percorso file:				data e firma